

# A GLOBAL PARTNER FOR MEDICAL AESTHETICS SYSTEMS

---

HIFU · Long Pulsed Alexandrite · Q-Switched Ruby · Q-Switched Nd:YAG · Long Pulsed Nd:YAG  
Copper Bromide · Fractional CO<sub>2</sub> · Surgical CO<sub>2</sub> · Dental Diode · EMS

---

## The World To BISON! BISON To The World!

BISON, established in 2002, is a manufacturer of skin lasers and obesity treatment devices.

BISON MEDICAL has been phenomenally growing year to year with exportation to more than 62 countries around the world. As the sole manufacturer of Copper Bromide in Korea, BISON handles all manufacturing processes from product planning to design, circuit design, programming, assembling and after-sales service.

## CEO's Message

As the president of BISON MEDICAL, I am proud to welcome you to the universe of one of the strongest and most phenomenal growing aesthetic laser companies in the world.

BISON MEDICAL has undergone a phenomenal expansion period over the last 10 years, working with more than 62 countries all over the world. This is a reason why BISON's devices are so frequently praised for doctors and patients in every corner of the globe. It is based on the development of its own unique technologies, beautiful design, creative solution, outstanding quality and a never failing will to pursue perfection and make the impossible possible.

My promise to you is that we will continue to push ourselves to surprise and impress you.

We believe that every skin-your skin-can be great skin.

All of us at BISON MEDICAL wish you the enchantment of beauty.

Thank you.

*Sun-Woo Lee, CEO*



## Research and Development (R&D)

Our engineers always strive to develop next generation laser based on our unique technologies and creative solution.



- ▶ We are investing in research and development in the long term for the development of existing technologies and new differentiated technologies.
- ▶ We are systemical system through operating the professional teams.

## Quality Control (QC)

We are doing our best to maintain customer satisfaction and quality of the equipment related to credibility.



- ▶ Factory quality control
- ▶ Establishment, implementation and maintenance of the production process system
- ▶ Quality improvement based on customer satisfaction and requirements
- ▶ Compliance with legal requirements of medical devices

## Design

Our designers have always made the difference and bring it to patients and physicians in the most attractive design expression.



- ▶ User-friendly design
- ▶ Technical balance of performance and appearance
- ▶ Stable mechanical structure
- ▶ User Interface improvements through consistent user tests

# BISON PRODUCTS

## HIFU

NEW



### ULCHE

- High Intensity Focused Ultrasound
- Various Cartridge
- Portable Compact Size
- User Friendly UI
- 150 slots for saving parameter



## Alexandrite

NEW



### Accento (Dual / Single)

- 755nm Long pulsed Alexandrite & 1064nm Long pulsed Nd:YAG Laser (Dual / Single)
- Flat-Top™ beam
- Wireless foot switch
- Cooling spray or Air cryo system
- Additional dual display synchronized with camera



## Ruby



### RubyStar

- 694nm Q-Switched Ruby laser
- Flat-Top™ beam
- High repetition rate (frequency)
- Auto-calibration system
- Wireless foot switch



## Copper Bromide



### COPPER BROMIDE

- Dual Yellow 578nm / Green 511nm laser
- 5 modes - Yellow / Green / Dual / Y10G / Y30G
- Fast heating and cool-down
- Auto-adjustable spot size



## Nd:YAG



### LUCID Q-PTP

- 1064nm / 532nm Q-Switched Nd:YAG laser
- Q-PTP mode
- Quasi-Long mode
- Auto-calibration system
- Auto-adjustable spot size



### LUCID QY

- 1064nm / 532nm Q-Switched Nd:YAG laser
- Quasi-Long mode
- Auto-adjustable spot size
- Flat-Top™ beam
- Durability



### LUCID LY

- 1064nm Long pulsed Nd:YAG laser
- Additional dual display synchronized with camera
- Cooling spray or Air cryo system
- Auto-calibration system



## CO<sub>2</sub>



### CYMA Clinic

- 10,600nm CO<sub>2</sub> surgical laser
- 15 Indication modes
- High power output
- Compact size & cost effective



### CYMA Dental

- 10,600nm CO<sub>2</sub> surgical laser
- 15 Indication modes
- High power output
- Compact size & cost effective



### MORE - XEL Stamp

- 10,600nm CO<sub>2</sub> fractional stamp laser
- Multiple modes (Stamp, UP, CW)
- RF-Driver
- Quick treatment



### MORE - XEL Scanning

- 10,600nm Fractional CO<sub>2</sub> laser - Scanner type
- Smart skin analysis system
- Multiple modes (Scanning, UP, SP, CW)
- RF-Driver / Galvano motor



### FIRE - XEL

- 10,600nm Fractional CO<sub>2</sub> laser - Scanner type
- A.I. Skin analyzing system
- Multiple modes (Scanning, UP, SP, CW)
- 3 - Way mode



### Aphrodite

- Fractional CO<sub>2</sub> laser for Vaginal rejuvenation
- No need for anesthetics
- Painless procedure
- Easy and quick procedure (less than 10 minutes)
- Disposable Cover of SUI, VR Handpiece (Optional)



## Dental Diode



### Dental Q

- Dental Diode Laser for soft tissue
- Selectable Among 808 / 915 / 940 / 976nm
- Compact Size Device With Hand Grip
- Multifunctional Handpieces With Fiber
- Intuitive Handling



## EMS



### Slim Wave

- Low frequency electrical stimulation (EMS)
- Promotes muscle relaxation
- Dual treatment system
- Compact design and simple operation
- Controls whole body slimming



# BISON 2016 NEW PRODUCTS

## ULCHE

### High Intensity Focused Ultrasound



HIFU(High Intensity Focused Ultrasound) equipment can treat a precise area with pinpoint accuracy based on the similar principle of burning a spot of black paper using magnifying glass without harming the surrounding area. The electrical energy matched with impedance inside ULCHE is transmitted to the transducer in the cartridge and converted to ultrasonic energy.

After it reach to the SMAS layer which is between the muscle layer and the subcutaneous fat layer, its thermal energy promotes collagen and makes the SMAS coagulation as well. Through this process we can lift and tighten the skin.

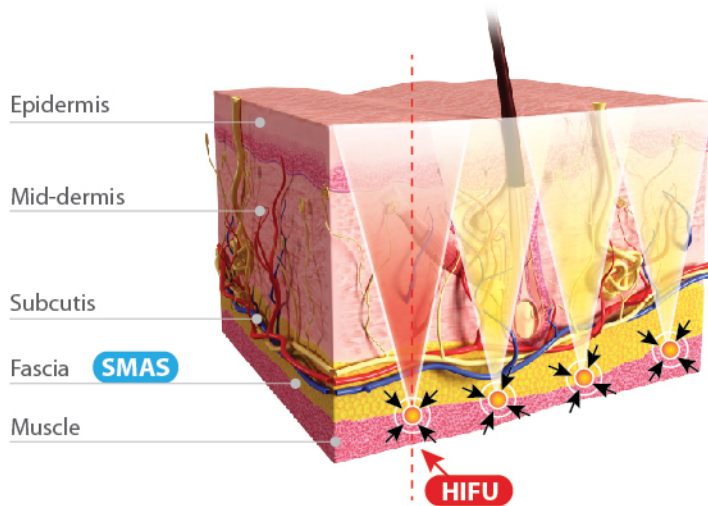
- Various Cartridges
- Portable Compact Size
- User Friendly UI
- 150 slots for saving parameter
- Reasonable Price

### System Specification

General	
Type	High Intensity Focused Ultrasound(HIFU)
Dimension (W x D x H)	375(W) x 440(D) x 1000(H)(mm) (Cart included)
Cartridge	7.0MHz (Depth 1.5mm) 7.0MHz (Depth 3.0mm) 4.0MHz (Depth 4.5mm) 4.0MHz (Depth 6.0mm)
Energy	0.1 - 3.0J
Length	5 - 25mm
Spacing	1.0 - 2.0mm
Spotsize	<1mm
Pulse width	10-100ms
Power consumption	300 VA, 220 VAC
Weight	5 kg (Cart excluded)
Option	Cart



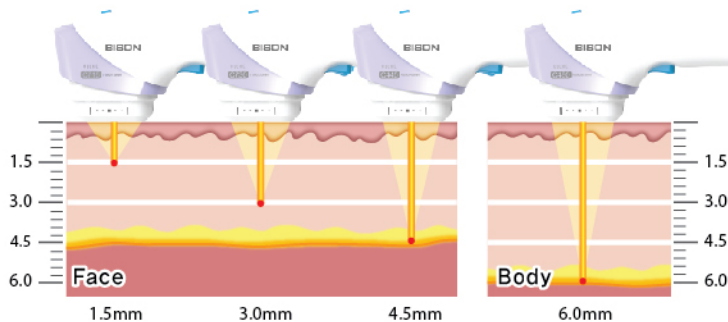
## Principle & Indication



### Indication

- Lifting
- Tightening
- Wrinkle Improvement
- Forehead wrinkle, eyebrows lifting, eye wrinkle, nasolabial fold, double chin, neck wrinkle
- Collagen Rejuvenation
- Body Slimming and etc.

## Cartridge



## UI

### Cartridge auto-recognition



### 150 slots for saving parameter



# BISON 2016 NEW PRODUCTS



755nm Long pulsed Alexandrite & 1064nm Long pulsed Nd:YAG Laser



- 755nm / 1064nm Dual pulsed
- Flat-Top™ beam
- High repetition rate (frequency)
- Auto-calibration system
- Additional dual display synchronized with camera
- Cooling spray or Air cryo system
- High energy
- Adjustable spot size
- Wireless foot switch

## System Specification

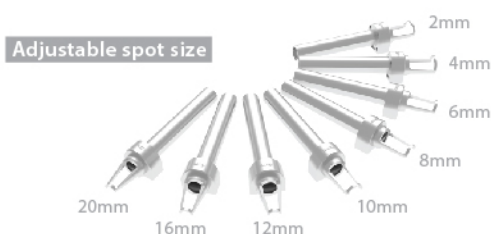
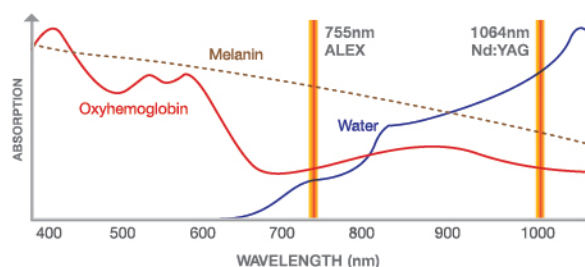
### General

Dimension (W x D x H)	450(W) x 908(D) x 1240(H) (mm)
Weight	120 Kg
Weight including accessories	127 Kg
Main voltage	220/230V, 50/60Hz
Maximum power consumption	8000 VA
Main current	30 A
Safety class	Class IV laser

### Laser system

Laser type	Long Pulsed Nd:YAG and Alexandrite laser
Wavelength	1064nm and 755nm
Beam delivery system	Via optical fiber Ø 1000µm x 3m
Aiming beam	532nm, 5mW
Maximum energy	Max 100J for Nd:YAG Max 60J for Alex
Maximum pulse fluence	Max 600J/cm <sup>2</sup>
Pulse width	0.2ms ~ 350ms
Pulse control	Finger switch or Wired Foot switch or Wireless Foot switch
Frequency	0.4 ~ 10Hz
Skin cooling type	Cooling spray or Air cryo system
Laser cooling	Water-to-air heat exchanger
Calibration	Auto-calibration through external port
Spot size	Ø 2, 4, 6, 8, 10, 12, 16, 20 (mm)

Dual Accento is the unique device combining 755nm Long pulsed Alexandrite and 1064nm Long pulsed Nd:YAG. The combination of two different wavelengths makes Dual Accento the highly effective system for hair removal and pigmented lesions treatment. Nd:YAG 1064nm long pulsed wavelength rejuvenates the skin by stimulating the collagen layer of the dermis and effectively treats vascular lesions.



	755nm Alexandrite	1064nm Nd:YAG
Indication	<ul style="list-style-type: none"> <li>· Hair removal</li> <li>· Pigmented lesions</li> <li>· Alex toning</li> <li>· Vascular lesions</li> </ul>	<ul style="list-style-type: none"> <li>· Skin rejuvenation</li> <li>· Vascular lesions</li> <li>· Hair removal</li> <li>· Wart / Nail fungus</li> </ul>



# BISON 2016 NEW PRODUCTS

## S I N G L E <sup>TM</sup> Accento

755nm Long pulsed Alexandrite



- Flat-Top™ beam
- High repetition rate (frequency)
- Auto-calibration system
- Additional dual display synchronized with camera
- Cooling spray or Air cryo system
- High energy
- Adjustable spot size
- Wireless foot switch

### System Specification

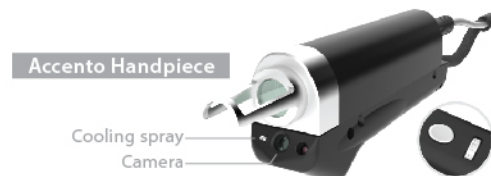
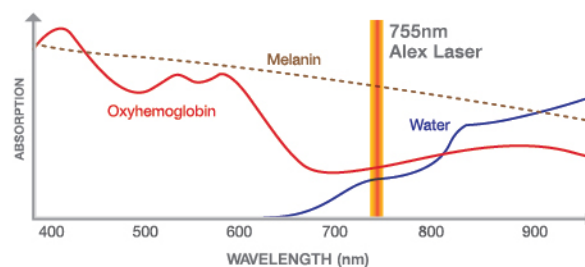
#### General

Dimension (W x D x H)	450(W) x 908(D) x 1240(H) (mm)
Weight	120 Kg
Weight including accessories	127 Kg
Main voltage	220/230V, 50/60Hz
Maximum power consumption	8000 VA
Main current	30 A
Safety class	Class IV laser

#### Laser system

Laser type	Long Pulsed Alexandrite laser
Wavelength	755nm
Beam delivery system	Via optical fiber Ø 1000µm x 3m
Aiming beam	532nm, 5mW
Maximum energy	Max 60J for Alex
Maximum pulse fluence	Max 600J/cm <sup>2</sup>
Pulse width	0.2ms ~ 350ms
Pulse control	Finger switch or Wired Foot switch or Wireless Foot switch
Frequency	0.4 ~ 10Hz
Skin cooling type	Cooling spray or Air cryo system
Laser cooling	Water-to-air heat exchanger
Calibration	Auto-calibration through external port
Spot size	Ø 2, 4, 6, 8, 10, 12, 16, 20 (mm)

Single Accento is a Long pulsed Alexandrite laser with 755nm wavelength. It is excellently treating hair removal and pigmentation. It has excellent effect in hair removal as the wavelength penetrates deep into the skin and reaches hair follicle. In addition, due to the high melanin absorption it realize safe and effective treatment without skin tissue damage.



	755nm Alexandrite	
Indication	· Hair removal	· Alex toning
	· Pigmented lesions	· Vascular lesions

# BISON PRODUCTS

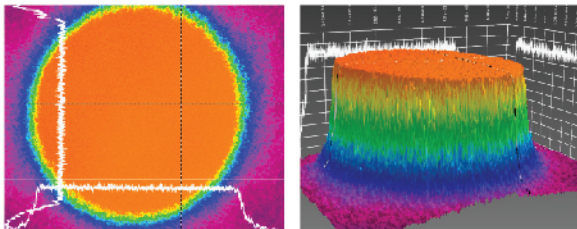
## Ruby Star™

694nm Q-Switched Ruby Laser



- Flat-Top™ beam
- High repetition rate (frequency)
- Auto-calibration system
- Durability
- Wireless foot switch

### Flat-Top™ beam



### System Specification

#### General

Dimension (W x D x H)	320(W) x 851(D) x 959(H) (mm) (Include Arm H : 1569 mm)
Weight	120.7 Kg
Weight including accessories	129 Kg
Main voltage	220/230V, 50/60Hz
Maximum power consumption	4800 VA
Main current	13 A
Safety class	Class IV laser

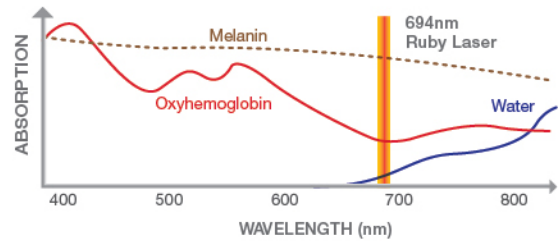
#### Laser system

Laser type	Q-Switched Ruby
Wavelength	694nm
Beam delivery system	Via 7-articulated arm
Aiming beam	LD, 532nm, 5mW
Maximum energy	Up to 1650mJ @ Head Aperture
Minimum energy	Up to 50mJ @ Head Aperture
Maximum Fluence	30 J/cm <sup>2</sup>
Minimum Fluence	0.1 J/cm <sup>2</sup>
Pulse width	Approx 30ns
Frequency	0.4 ~ 2.0Hz
Laser cooling	Water-to-air heat exchanger
Calibration	Auto-calibration through external port

#### Spot size

Flat-Top™ Handpiece	Ø 2, 4, 6, 8, 10 (mm)
Fractional Handpiece	6x6 mm <sup>2</sup> , 9x9 dots, Up to 3.5 J/cm <sup>2</sup>

Ruby Star is a Q-switched Ruby laser, which delivers 694nm energy using ruby as a medium. The wavelength of 694nm is well-absorbed by melanin pigment, which is widely used for pigment lesions treatment. It is also effective for removal of colored tattoos such as black, dark blue and green colors, having a wider application than 1064nm. Because 694nm penetrates deeper than 532nm, it is more effective against freckles, café au lait spots and other dark lesions.



### Adjustable spot size



Indication · Pigmented lesions · Tattoo & make-up removal · Ruby toning

# BISON PRODUCTS

## COPPER BROMIDE™

578nm Yellow / 511nm Green / Dual / Y10G / Y30G



- Dual wavelength of the Copper Bromide laser
- Selective treatment through the various spot size
- The benefits of laser auto-calibration
- Fast heating and cool-down
- Selective use of the 5 different kinds of Dual wavelength

• 511nm(100%) , 578nm(100%)

• 511nm(10%) , 578nm(100%)

• 511nm(30%) , 578nm(100%)

• 511nm(0%) , 578nm(100%)

• 511nm(100%) , 578nm(0%)

### System Specification

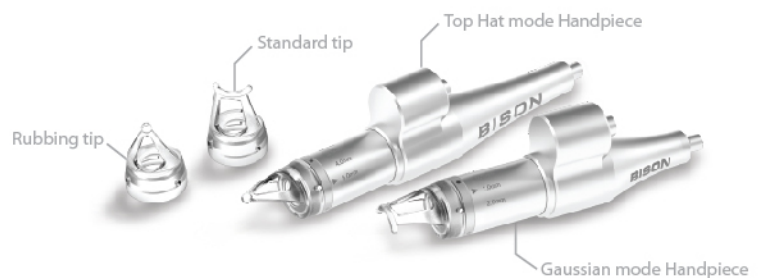
#### General

Dimension (W x D x H)	370(W) x 1320(D) x 1010(H) (mm)
Weight	190 Kg
Weight including accessories	205 Kg
Main voltage	220-240 VAC, 50-60Hz
Maximum power, in operation	1700 W
Safety class	Class IV laser

#### Laser system

Laser type	Copper Bromide Laser
Wavelength	511nm(100%) , 578nm(100%) 511nm(10%) , 578nm(100%) 511nm(30%) , 578nm(100%) 511nm(0%) , 578nm(100%) 511nm(100%) , 578nm(0%)
Beam mode	Multi mode
Spot size (Automatically adjustable)	0.6mm / 1.0mm / 2.0mm 3.0mm / 4.0mm / 5.0mm
Fluence on the skin	75 - 2500 J/cm <sup>2</sup> at spotsize 0.6mm 30 - 900 J/cm <sup>2</sup> at spotsize 1.0mm 7 - 222 J/cm <sup>2</sup> at spotsize 2.0mm 3 - 99 J/cm <sup>2</sup> at spotsize 3.0mm 2 - 55 J/cm <sup>2</sup> at spotsize 4.0mm 1 - 35 J/cm <sup>2</sup> at spotsize 5.0mm
Pulse duration	10 ~ 1000ms , Continuous wave
Delivery system	Via optical fiber
Laser cooling	Air

Copper Bromide (CuBr) laser is a high-tech laser resolving various skin problems quickly and effectively. As a medical device of CVL, CBL method of dual wavelength which is said to be the highest class technology all over the world among the lasers currently released in the market, can display maximum effect due to its differentiated laser technology.



#### Indication

- **Vascular lesions**
  - Cherry angioma, Telangiectasia, Flashes, Normal vascular lesion, Acne redness
- **Pigmented lesions**
  - Freckles, Lentigo, Melasma, Whitening
- **Etc.**
  - Warts, Skin tags

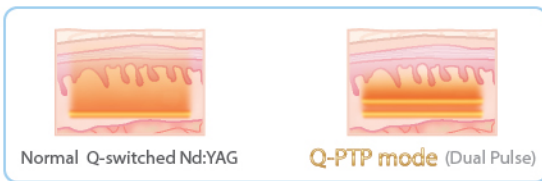
# BISON PRODUCTS

## LUCID Q-PTP™

1064nm / 532nm Q-Switched Nd:YAG Laser



- High repetition rate (frequency)
- Auto-Calibration System
- Auto-adjustable spot size
- Q-PTP mode
- Quasi-Long mode
- Durability
- High pulse frequency



### System Specification

#### General

Dimension (W x D x H)	320(W) x 830(D) x 1010(H) (mm) (Include Arm H : 1620 mm)
Weight	87.5 Kg
Weight including accessories	96 Kg
Main voltage	220/230V, 50/60Hz
Maximum power consumption	3000 VA
Main current	12 A
Safety class	Class IV laser

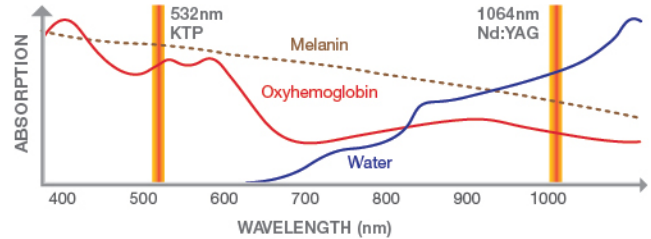
#### Laser system

Laser type	Q-Switched Nd:YAG
Wavelength	1064nm / 532nm
Beam delivery system	Via 7-articulated arm
Aiming beam	635nm, 5mW
Beam profile	Flat-Top™ beam
Energy (@Head Aperture)	Up to 2200mJ @ 1064nm PTP Q-Switched Up to 600mJ @ 532nm PTP Q-Switched Up to 1200mJ @ 1064nm Q-Switched Up to 500mJ @ 532nm Q-Switched Up to 3400mJ @ 1064nm Quasi-Long
Pulse width	5~7ns @ 1064nm Q-Switched 5~7ns @ 532nm Q-Switched ~20ns @ 1064nm PTP Q-Switched ~20ns @ 532nm PTP Q-Switched 300µs @ 1064nm Quasi-Long
Frequency	Up to 25Hz @ 1064nm Q-Switched Up to 15Hz @ 532nm Q-Switched Up to 15Hz @ 1064nm PTP Q-Switched Up to 15Hz @ 532nm PTP Q-Switched Up to 25Hz @ 1064nm Quasi-Long
Laser cooling	Water-to-air heat exchanger
Calibration	Auto-calibration through external port

#### Spot size (\*Optional)

Zoom Handpiece	1064nm (Ø 1.5, 2.3, 4, 5, 6, 7.5, 9, 10)mm 532nm (Ø 1, 1.5, 2.5, 3.5, 4.5, 5.5, 7, 8.5, 9.5)mm
*1064nm Fractional Handpiece	6 x 6 mm <sup>2</sup> , 9 x 9 dots, Up to 5.2J/cm <sup>2</sup>
*532nm Fractional Handpiece	6 x 6 mm <sup>2</sup> , 9 x 9 dots, Up to 1.3J/cm <sup>2</sup>

LUCID Q-PTP has two wavelengths of 1064nm and 532nm. To reduce side effects of high energy, it adopts PTP mode which divides the high energy into two pulses with very short duration. LUCID Q-PTP effectively reduces pigmented lesions on dermis and epidermis and also minimizes the risk of side effects such as hypopigmentation, pigmentation and recurrence of Melasma, comparing to previous laser toning procedures.



#### Indication

- Epidermal Pigmentation lesions
- Dermal Pigmentation lesions
- Toning (Melasma, Hyper pigmentation, Genesis toning)
- Soft peeling

# BISON PRODUCTS

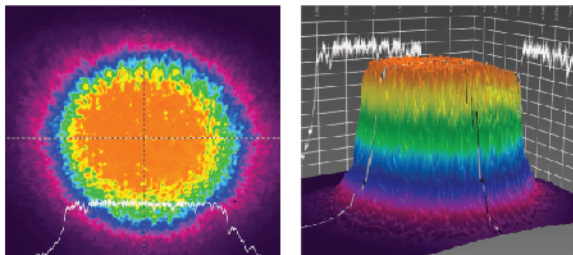
## LUCID QY™

1064nm / 532nm Q-Switched Nd:YAG Laser



- 532nm / 1064nm Dual pulsed
- Quasi-Long mode
- High repetition rate (frequency)
- Advanced arm
- Durability
- Auto-adjustable spot size
- Flat-Top™ beam

### Flat-Top™ beam



### System Specification

#### General

Dimension (W x D x H)	320(W) x 830(D) x 1010(H) (mm) (Include Arm H : 1620 mm)
Weight	83 Kg
Weight including accessories	91.5 Kg
Main voltage	220/230V, 50/60Hz
Maximum power consumption	3000 VA
Main current	12 A
Safety class	Class IV laser

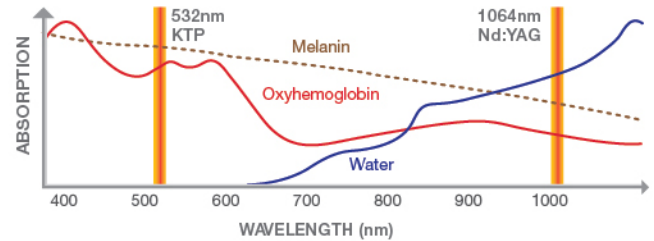
#### Laser system

Laser type	Q-Switched Nd:YAG
Wavelength	1064nm / 532nm
Beam delivery system	Via 7-articulated arm
Aiming beam	635nm, 5mW
Beam profile	Flat-Top™ beam
Energy (@Head Aperture)	Up to 1600mJ @ 1064nm Quasi-Long Up to 1400mJ @ 1064nm Q-Switched Up to 600mJ @ 532nm Q-Switched
Pulse width	~5ns @ 1064nm Q-Switched ~5ns @ 532nm Q-Switched 300µs @ 1064nm Quasi-Long
Frequency	0.4 ~ 15Hz
Laser cooling	Water-to-air heat exchanger

#### Spot size (\*Optional)

Zoom Handpiece	1064nm (Ø 1.5, 2, 3, 4, 5, 6, 7.5, 9, 10)mm 532nm (Ø 1, 1.5, 2.5, 3.5, 4.5, 5.5, 7, 8.5, 9.5)mm
*1064nm Fractional Handpiece	6 x 6 mm <sup>2</sup> , 9 x 9 dots, Up to 3.0J/cm <sup>2</sup>
*532nm Fractional Handpiece	6 x 6 mm <sup>2</sup> , 9 x 9 dots, Up to 1.1J/cm <sup>2</sup>

LUCID QY uses two wavelength of 1064nm and 532nm with very short pulse duration time, thus the laser is absorbed in melanin pigment selectively without damaging surrounding tissues. 532nm wavelength removes the pigments on epidermis such as freckles, lentigos and age spots mostly, while 1064nm wavelength treats lesions responding to the pigmentation located deep inside of dermis, such as tattoo, nevus of ota.



### Indication

- Epidermal Pigmentation lesions
- Dermal Pigmentation lesions
- Toning (Melasma, Hyper pigmentation, Genesis toning)
- Soft peeling

# BISON PRODUCTS

## LUCID LY™

1064nm Long Pulsed Nd:YAG Laser



- Additional dual display synchronized with camera
- Adjustable spot size
- Cooling spray or Air cryo system
- Auto-Calibration System
- Durability



Additional Dual Touch Display Synchronized with Camera



Auto-Calibration System



Unique Jog & Shuttle Controller

### System Specification

#### General

Dimension (W x D x H)	450(W) x 1040(D) x 950(H) (mm)
Weight	115 Kg
Weight including accessories	122 Kg
Main voltage	220/230V, 50/60Hz
Maximum power consumption	2990 VA
Main current	12 A
Safety class	Class IV laser

#### Laser system

Laser type	Long Pulsed Nd:YAG
Wavelength	1064nm
Beam delivery system	Via optical fiber Ø 1000µm x 3m
Aiming beam	658nm, 5mW
Maximum pulse fluence	600J/cm <sup>2</sup>
Pulse width	0.2ms ~ 350ms
Frequency	0.4 ~ 10Hz
Pulse control	Finger switch or Wired Foot switch or Wireless Foot switch
Laser cooling	Water-to-air heat exchanger
Calibration	Auto-calibration through external port
Spot size	Ø 2, 4, 6, 8, 10, 12, 16, 20 (mm)

LUCID LY has low absorption in melanin and deeper skin penetration due to its high energy. It stimulates dermis layer without damage of epidermis, rearranges collagen and thus improves loosen skin and fine wrinkles. Especially, it is effective for treating varicose veins since 1064nm wavelength has a good absorption in blue. The advantage of Lucid LY comparing to dye laser is its deeper penetration but less side effects caused by low absorption in melanin.



LY Handpiece

Cooling spray  
Camera



**Indication** · Skin rejuvenation(Wart, Nail fungus) · Vascular lesions · Hair Removal

# BISON PRODUCTS



## 10,600nm Fractional CO<sub>2</sub> laser for Vaginal rejuvenation



- Non-surgical procedure (No-Bleeding)
- No need for anesthetics and the procedure is pain free
- Easy and quick procedure (less than 10 minutes)
- Quick recovery to daily activities
- Disposable Cover of SUI, VR Handpiece (Optional)
- All metal Handpiece (VR / SUI)

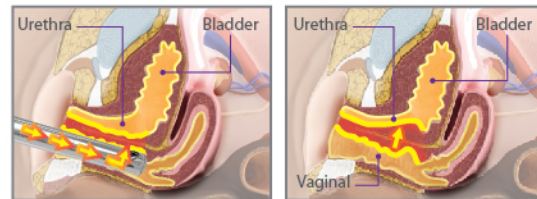


## System Specification

General	
Dimension (W x D x H)	320(W) x 710(D) x 970(H) (mm) (Include Arm H: 1610mm)
Weight	55 Kg
Laser system	
Laser type	Fractional CO <sub>2</sub> laser, RF driver type
Wavelength	10.57 ~ 10.63 μm, invisible infrared
Laser peak power	75W
Laser Average power	30W
Laser mode	SUI / VR, STAMP, Ultra Pulse, CW
Spot size	70 μm, (3x3 dots, 3x9 dots, 7x7 dots)
Delivery system	7-joint, fixed mirror articulated arm
Laser cooling	Air
Surgical system	
SUI / VR Mode & Fractional STAMP Mode	Power 5.0 ~ 30.0 W On 10 ~ 1000 ms Off 10 ~ 3000 ms, Single
Surgical - Ultra Pulse	Power 5.0 ~ 30.0 W Pulse Width 400 ~ 1250 μs On 10 ~ 1000 ms Off 10 ~ 3000 ms, Single
Continuous Wave	Power 0.5 ~ 30 W

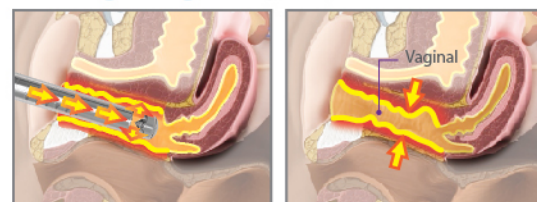
This equipment has the newest RF tube and stamp method, and handpieces can be changed for various purposes allowing both CO<sub>2</sub> fractional laser and ultra-pulsed CO<sub>2</sub> laser procedures. It is an advanced conceptual device for gynecological treatments by stimulating collagen within vaginal mucous membranes to make vaginal canal more elastic after the treatment on urinary incontinence and other lesions in the vagina (vaginitis, vaginal dryness, etc.) by using SUI hand piece (Stress Urinary Incontinence) and VR Handpiece (Vaginal Rejuvenation).

## Treatment of Urinary incontinence



In order to improve the symptoms of protrusion of the bladder or the urethra towards the vagina, the Aphrodite is used to tighten the vaginal walls.

## VENUS Tightening (How Vaginal Rejuvenation works)



By delivering heat energy into the mucous tissue within the pelvis, collagen remodeling is induced, which in turn leads to contraction of the vaginal canal.



	Obstetrics and Gynecology	Dermatology
Indication	<ul style="list-style-type: none"> <li>· SUI (Stress Urinary Incontinence)</li> <li>· SUI improvement</li> <li>· VR (Vaginal rejuvenation)</li> <li>· Vaginal dryness improvement</li> <li>· Vaginal atrophy improvement</li> <li>· Vaginitis improvement</li> <li>· Sexual satisfaction improvement</li> <li>· Whitening of Labias</li> </ul>	<ul style="list-style-type: none"> <li>· Surgical</li> <li>· Ultra Pulse (Nevus, Wart, Seborrheic keratosis)</li> <li>· Continuous Wave (Circumcision, Snoring, Hemorrhoids)</li> <li>· CO<sub>2</sub> Fractional Laser</li> <li>· Wrinkle &amp; Fine line, Skin rejuvenation, Large pore</li> <li>· Skin tone &amp; skin texture, Acne scar</li> <li>· Surgical scar, Striae distensae</li> </ul>

# BISON PRODUCTS

## FIRE-XEL™

10,600nm Fractional CO<sub>2</sub> laser - Scanner type



- 3 - Way mode
- A.I. Skin analyzing system
- Premium quality
- Various selectivity-over 3,000 scanning modes
- Human-friendly design

### System Specification

#### General

Dimension (W x D x H)	320(W) x 420(D) x 1100(H) (mm) (Include Arm H : 1840mm)
Weight	38 Kg

#### Laser system

Laser type	Fractional CO <sub>2</sub> laser, Scanner type
Wavelength	10.57 ~ 10.63 μm, invisible infrared
Laser power output	Up to 30W
Adjustable Spot size	120 / 300 / 600 μm
Delivery system	7-joint, fixed mirror articulated arm
Laser cooling	Water

#### Scanner system

Scanning area	X : 3 ~ 20 mm, Y : 3 ~ 20 mm
Scanning shape	Rectangle, Circle, Diamond, Hexagon, Round rectangle
Scanning direction	Sequence, Converge, Diverge, Smart Random, Spray
Dot pitch (Density)	0.5 ~ 1.9 mm
Pulse width	Typically 360 ~ 10,000 μs
Energy in one dot	Typically 5.4 ~ 150 mJ (@15 Watt, 1 time)
Repeat delay	Single, 100 ~ 3,000 ms
Overlap	1 ~ 9 times

#### Surgical system

Ultra Pulse	Pulse width 400 ~ 1,250 μs Exposure time 10 ~ 1,000ms Repeat delay 10 ~ 1,000ms / Single Power peak 7.0 ~ 20.0 Watt
Super Pulse	Exposure time 500 ~ 9,000 μs Repeat delay 10 ~ 1,000ms / Single Power 10.0 ~ 30.0 Watt
Continuous Wave	Power 0.5 ~ 30.0 Watt

FIRE-XEL is a combination of the Surgical CO<sub>2</sub> laser, Fractional CO<sub>2</sub> laser and a skin analysis system. This equipment delivers energy deeply into the skin to induce collagen formation and skin regeneration. The multi-mode of Scanning, UP, SP, and CW delivers highly effective and accurate treatment. The skin analysis system provides most appropriate treatment values for safe and effective treatment.

### Multi Mode Fractional CO<sub>2</sub> Laser



Scanning Mode

Clinical Mode

Surgical Mode



### Indication

- **Fractional Mode**
  - Full face skin rejuvenation(whitening, lifting), Scars, Large pores
  - Wrinkles, Full Face skin resurfacing
- **Surgical**
  - Freckle, Spot, Birthmark, Dark patches
  - Condyloma, Wart, Callus
  - Phimosis, Allergy rhinitis, Snoring, Hemorrhoids,



# BISON PRODUCTS

## Scanning™ MORE-XEL

10,600nm Fractional CO<sub>2</sub> laser - Scanner type



- Smart skin analysis system
- Multi-mode
- World's first skin type selection function
- Simple to use & Faster treatment
- Durability
- RF-DRIVER
- Galvano motor

### System Specification

#### General

Dimension (W x D x H)	320(W) x 710(D) x 970(H) (mm) (Include Arm H:1610mm)
Weight	54 Kg

#### Laser system

Laser type	Fractional CO <sub>2</sub> laser, Scanner type
Wavelength	10.57 ~ 10.63 μm, invisible infrared
Laser power output	Up to 30W
Adjustable Spot size	100 / 300 / 600 μm
Delivery system	7-joint, fixed mirror articulated arm
Laser cooling	Air

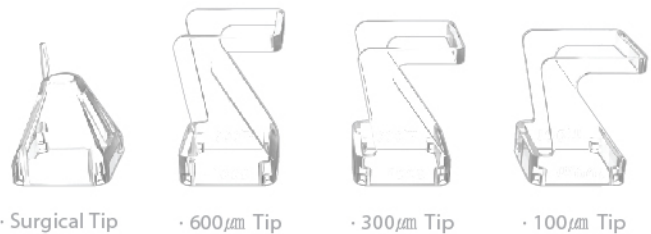
#### Scanner system

Scanning area	X: 3 ~ 20 mm, Y: 3 ~ 20 mm
Scanning shape	Rectangle, Circle, Diamond, Hexagon, Round rectangle
Scanning direction	Sequence, Converge, Diverge, Smart Random, Spray
Dot pitch (Density)	0.5 ~ 1.9 mm
Pulse width	Typically 20 ~ 24,000 μs
Energy in one dot	Typically 0.2 ~ 240 mJ (@10 Watt, 1 time)
Repeat delay	Single, 100 ~ 3,000 ms
Overlap	1 ~ 9 times
Overlap delay	200 ~ 40,000 μs

#### Surgical system

Ultra Pulse	Pulse width 100 ~ 1,250 μs Exposure time 10 ~ 1,000 ms Repeat delay 10 ~ 1,000ms / Single
Super Pulse	Exposure time 100 ~ 9,000 μs Repeat delay 10 ~ 1,000ms / Single
Continuous Wave	Power 0.5 ~ 10 Watt

MORE-XEL Scanning is a Fractional CO<sub>2</sub> laser where energy is delivered into the dermis on a small spot of area. This induces collagen formation, to aid continuing skin regeneration. It has various modes, including Scanning, UP, SP, and CW, for certain treatments. Skin analysis system diagnoses the skin's moisture to provide the most appropriate treatment values for safe and effective treatment.



### Indication

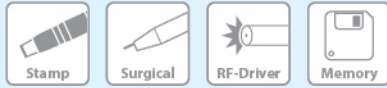
- **Fractional Mode**
  - Full face skin rejuvenation(whitening, lifting), Scars, Large pores
  - Wrinkles, Full Face skin resurfacing
- **Surgical**
  - Freckle, Spot, Birthmark, Dark patches
  - Condyloma, Wart, Callus
  - Phimosi, Allergy rhinitis, Snoring, Hemorrhoids,

# BISON PRODUCTS

## MORE-XEL

Stamp/Spray  
UltraPulse

10,600nm Fractional CO<sub>2</sub> laser - RF Driver type



- RF-Driver
- Stamp Mode
- Spray Mode
- Stable beam quality
- Precise beam
- Dynamic Multi Mode (All in one)

### System Specification

#### General

Dimension (W x D x H)	320 x 750 x 700 mm
Weight	55 kg
Weight including accessories	57.2 kg
Main voltage	200~240 VAC, 50~60 Hz
Maximum power, in operation	330 VA
Safety class	Class IV
Fuses	Little AC 250V 10A x 2

#### Laser system

Laser type	fractional CO <sub>2</sub> laser, RF driver type
Laser mode	Stamp, Spray, Ultra pulse, CW
Wavelength	10.57 ~ 10.63 μm, invisible infrared
Beam mode quality	TEM00, 95% purity
Beam quality (at 1/e <sup>2</sup> )	M <sup>2</sup> ≤ 1.2
Laser power output	Up to 75 W
Spot size	70 μm, 49 pixel (10 x 10 mm)
Delivery system	7-joint, fixed mirror articulated arm
Aiming beam	3.5mw, 650nm red diode laser
Cooling system	air

#### Stamp Mode

Pulse frequency range	25 ~ 1000 Hz
Pulse Duration range	100 ~ 700 μs
Exposure time range	50 ~ 400 ms
Repeat time range	400 ~ 3000 ms, Single, Spray

#### Ultra Pulse Mode

Pulse width	200 ~ 1000 μs
Repeat time	

#### CW Mode

Continuous wave power	0.5 ~ 40 Watt
-----------------------	---------------

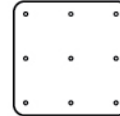
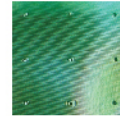
#### Environmental Condition

Temperature	+10 ~ +40°C
Relative humidity	30 ~ 75%
Atmospheric pressure	700 ~ 1060 hPa

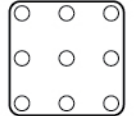
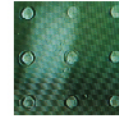
MORE-XEL Scanning is a Fractional CO<sub>2</sub> laser where energy is delivered into the dermis on a small spot of area. This induces collagen formation, to aid continuing skin regeneration. The 49 threads of laser beams irradiating at the same moment shorten time to treat. It has various modes, including Scanning, UP, SP, and CW, for certain treatments.

#### Spot size comparison

##### MORE-XEL



##### Other



	MORE-XEL	Other stamp-type	Other scanner-type
Spot size (Unit:μm)	70~80	200~250	250~300



#### Indication

- Surgical
- Ultra Pulse (Nevus, Wart, Seborrheic keratosis)
- Continuous Wave (Circumcision, Snoring, Hemorrhoids)
- CO<sub>2</sub> Fractional Laser
- Wrinkle & Fine line, Skin rejuvenation, Large pore
- Skin tone & skin texture, Acne scar
- Surgical scar, Striae distensae

# BISON PRODUCTS

BS-100

## Slim Wave™

Low frequency electrical stimulation (EMS)



- Graceful design & Convenient function
- Promotes muscle relaxation
- Pre-set programs
- Enhances blood flow
- User-friendly operation

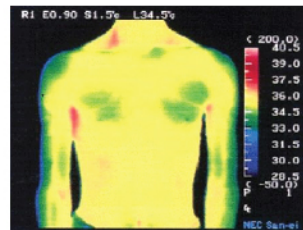


### System Specification

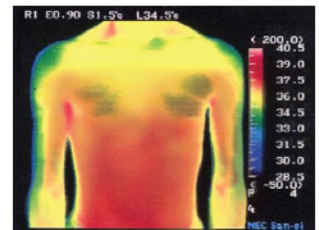
General	
Type	Low frequency electrical stimulation
Dimension (W x D x H)	337(W) x 243(D) x 85(H) (mm)
Weight	3.7 Kg
Main voltage	AC 110-220V, 50/60Hz
Power consumption	30W
Classification	Class 1, Type BF
Max output current	40mA RMS
Max output voltage	65Vp-p
Channel	8 CH
Pulse	250µs
Treatment hertz	50Hz ~ 500Hz
Treatment time	5min ~ 60min
Accessory	Single pad 6ea(3set), Spin pad 1ea, etc.
Application	Selective Fat Breakdown Cellulite Reduction Muscular Pain Reduction

SLIM WAVE Low frequency stimulator provides not only various effects including lipolysis and skin elasticity through contraction and relaxation of muscle by stimulating muscle, but also stable output such as ZERO START, BLOCKS EXCESS CURRENT, etc.

### Thermal Photography Shows Muscles Working



Before



After



### Indication

- Upper arms region (Single Mode)  
- Muscle Build up / Strengthening, Toning & Lifting
- Abdomen region (Single Mode + Spin Mode)  
- Selective Fat Breakdown, Toning & Lifting, Alleviation of Chronic Constipation
- Femoral region (Single Mode)  
- Selective Fat Breakdown, Cellulite Reduction, Toning & Lifting
- Back of the chest region (Single Mode)  
- Muscle Build up / Strengthening
- Buttocks region (Single Mode)  
- Selective Fat Breakdown, Cellulite Reduction, Body Care
- Lower leg region (Single Mode)  
- Selective Fat Breakdown, Cellulite Reduction, Toning & Lifting

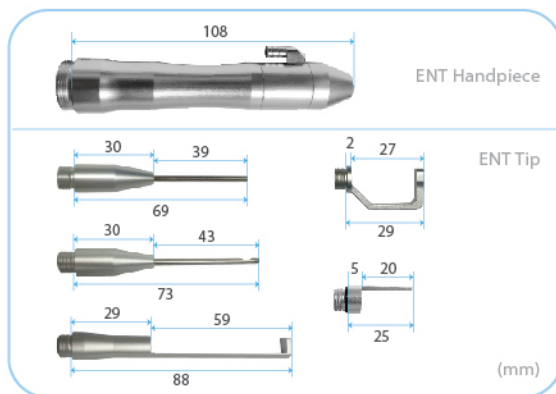
# BISON PRODUCTS

## SURGICAL CO<sub>2</sub> LASER SYSTEM CYMA<sup>™</sup> Clinic

10,600nm Surgical CO<sub>2</sub> laser



- 15 Indication modes
- Storage of personalized laser treatment data
- SuperPulse-, Pulser- and CW operating modes
- Cutting edge innovative
- Safe, Effective and Reliable
- Patient Satisfaction
- High Power Output



### System Specification

#### General

Dimension (W x D x H)	335(w) x 425(D) x 1160(H) (mm) (Include Arm H : 1870mm)
Weight	40.3 Kg

#### Laser system

Laser type	Surgical CO <sub>2</sub> laser
Wavelength	10.57 ~ 10.63 $\mu$ m, invisible infrared
Laser power output, continuous	30 Watt at arm's tail
Spot size	120 $\mu$ m
Delivery system	7-joint, fixed mirror articulated arm
Laser cooling	Water

#### Surgical system

Ultra Pulse	Pulse width 400 ~ 1,250 $\mu$ s Exposure time 10 ~ 1,000 ms Repeat delay 10 ~ 1,000 ms / Single Power peak 7.0 ~ 20 Watt
Super Pulse	Exposure time 500 ~ 9,000 $\mu$ s Repeat delay 10 ~ 1,000 ms / Single Power 10.0 ~ 30.0 Watt
Continuous Wave	Power 0.5 ~ 30.0 Watt

#### CYMA Clinic option

ENT Kit	1 ENT handpiece / 5 Tips
---------	--------------------------

15 kinds of indication modes are provide against lesions. As user can adjust irradiation interval as well as pulse, it is possible to apply special treatment for every single patient. Function of controlling bleeding, reducing pain, preventing anti-bacterial effect from secondary infection can increase the operational convenience for user as well as operational satisfaction for patient.



#### Indication

- Surgical
- Ultra Pulse (Nevus, Wart, Seborrheic keratosis)
- Continuous Wave (Circumcision, Snoring, Hemorrhoids)

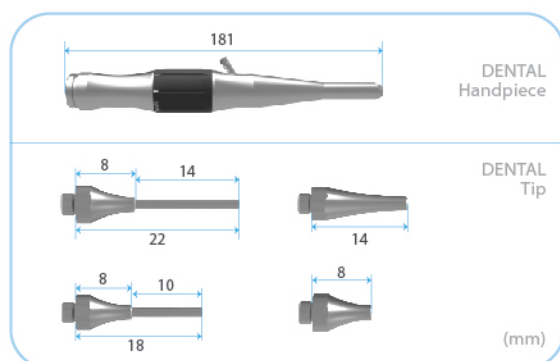
# BISON PRODUCTS

## DENTAL CO<sub>2</sub> LASER SYSTEM CYMA<sup>™</sup>Dental SOFT TISSUE LASER

10,600nm Surgical CO<sub>2</sub> laser



- 15 Indication modes
- Storage of personalized laser treatment data
- SuperPulse-, Pulser- and CW operating modes
- Cutting edge innovative
- Safe, Effective and Reliable
- Patient Satisfaction
- High Power Output



### System Specification

#### General

Dimension (W x D x H)	335(w) x 425(D) x 1160(H) (mm) (Include Arm H : 1870mm)
Weight	40.3 Kg

#### Laser system

Laser type	Surgical CO <sub>2</sub> laser
Wavelength	10.57 ~ 10.63 $\mu$ m, invisible infrared
Laser power output, continuous	30 Watt at arm's tail
Spot size	120 $\mu$ m
Delivery system	7-joint, fixed mirror articulated arm
Laser cooling	Water

#### Surgical system

Ultra Pulse	Pulse width 400 ~ 1,250 $\mu$ s Exposure time 10 ~ 1,000 ms Repeat delay 10 ~ 1,000 ms / Single Power peak 7.0 ~ 20 Watt
Super Pulse	Exposure time 500 ~ 9,000 $\mu$ s Repeat delay 10 ~ 1,000 ms / Single Power 10.0 ~ 30.0 Watt
Continuous Wave	Power 0.5 ~ 30.0 Watt

#### CYMA Clinic option

ENT Kit	1 ENT handpiece / 4 Tips
---------	--------------------------

CYMA Dental is applied different procedure from existing that not only vibrating, noise, and bleeding are almost none, but also pain and swelling are less which fulfill the patient satisfaction. It increases user's convenience by realizing 15 lesion of indication modes, patient treatment data storage function, repeat time depending on patient's condition, pulse width adjustment.



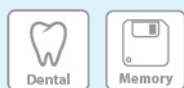
#### Indication

- Laser anesthesia, Lingual frenectomy
- Fluoride application & tooth bleaching, Implant surgery
- Occlusal hypersensitivity, Removal of tooth pigmentation
- Tooth canal irrigation, Periodontal pocket irrigation, etc.

# BISON PRODUCTS

## Dental Q™

Selectable Among 808/915/940/976nm  
Dental Diode Laser

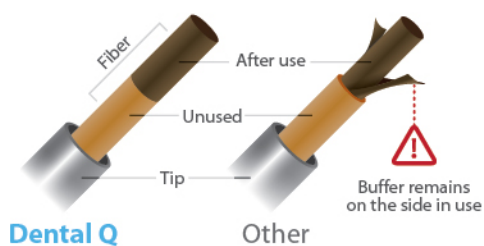


- Selectable wavelength among 808nm / 915nm / 940nm / 976nm
- Compact size device with hand grip
- Multifunctional handpieces with fiber
- Intuitive handling
- Touch screen interface



### No need to strip the buffer of the fiber

Only color of fiber gets darker in use



### System Specification

#### General

Dimension (W x D x H)	167(W) x 146.3(D) x 236(H) (mm)
Weight	1.6 Kg
Main voltage	12VDC Adaptor
Safety class	Class IV laser
Connection	SMA905

#### Laser module

Wavelength	Selectable Among 808/915/940/976nm
Laser power output, continuous	808nm / 7W 915nm / 8W 940nm / 8W 976nm / 8W
Delivery system	Fiber patch cord
Fiber core diameter	200 / 300 / 400µm
Aiming beam	Red 650nm, ~5mW

Dental-Q is diode dental laser for soft tissue. Four different kinds of wavelength (808/915/940/976nm) can be selected. Tips are designed to access easily to periodontal pocket and dental pulp for convenient procedure. There is no need to strip the buffer after procedure, since Dental-Q is adopting differentiated optic fiber. Dental-Q can enhance convenience of procedure by providing high power output(8W), user-friendly UI displayed on 10.7 inch LCD monitor.



#### Indication

- Tooth Canal irrigation, Periodontal abscess, Implant surgery
- Hemostasis after tooth extraction, Dental caries
- Fluoride application & Tooth bleaching
- Removal of tooth pigmentation, etc.

## Our Global Partners Since 2002



### Asia

- Bangladesh
- Cambodia
- China
- Hong Kong
- India
- Indonesia
- Japan
- Malaysia
- Pakistan
- Philippines
- Singapore
- Taiwan
- Thailand
- Vietnam

### Europe

- Bulgaria
- Czech
- France
- Germany
- Hungary
- Italy
- Kazakhstan
- Netherlands
- Poland
- Romania
- Russia
- Slovakia
- Spain
- Sweden
- Switzerland
- Ukraine
- United Kingdom

### America

- Argentina
- Brazil
- Chile
- Colombia
- Costa Rica
- Ecuador
- Guatemala
- Mexico
- Peru
- USA

### Middle East

- Bahrain
- Iran
- Iraq
- Kuwait
- Lebanon
- Qatar
- Saudi Arabia
- Turkey
- United Arab Emirates

### Africa

- Egypt
- Libya
- Morocco

### Oceania

- Australia

FOR EXPORT ONLY

This information can be updated according to the product upgrade.



**BISON**  
MEDICAL EQUIPMENT MANUFACTURER

[www.bisonmedical.com](http://www.bisonmedical.com)  
[www.facebook.com/bisonmedical](https://www.facebook.com/bisonmedical)

(Gasan-dong, Ace High-end Tower 6), 234, Beotkkot-ro, Geumcheon-gu, Seoul, Korea (zip code 08513)  
Office / R&D: 1802(18F), Factory: 1801(18F)

Tel) +82-2-865-7121 Fax) +82-2-865-7131 Mail) sales@bisonmedical.com

Copyright© BISON CO., LTD. All rights reserved.